

TROY Impulse

Network Authenticated Login

Impulse is a Network Access Control system designed for Authenticating login access to the Troy University Network.

- How Impulse will affect my daily work habits.
- Why you need another login process.
- What you need to make it work.
- How often you will need to login.

How Impulse will affect my daily work habits

- The only change to your daily work habit you will see is at the point you will need to re-authenticate. This will require you to open your Internet Browser, which will in turn bring up the “Login” page, and use your email account and password to get authenticated to the Troy University Network.

What if I do not know my UserID or Password?

- If you do not know your UserID click the following link:
- https://it.troy.edu/email/user_id_help.html
- If you do not know your email password then click this link:
- <https://it.troy.edu/email/index.html>

Why you need another login process

- Troy University, in accordance with compliance regulations, will require a login to the network in order to gain access to Internet, Email, and other online resources.

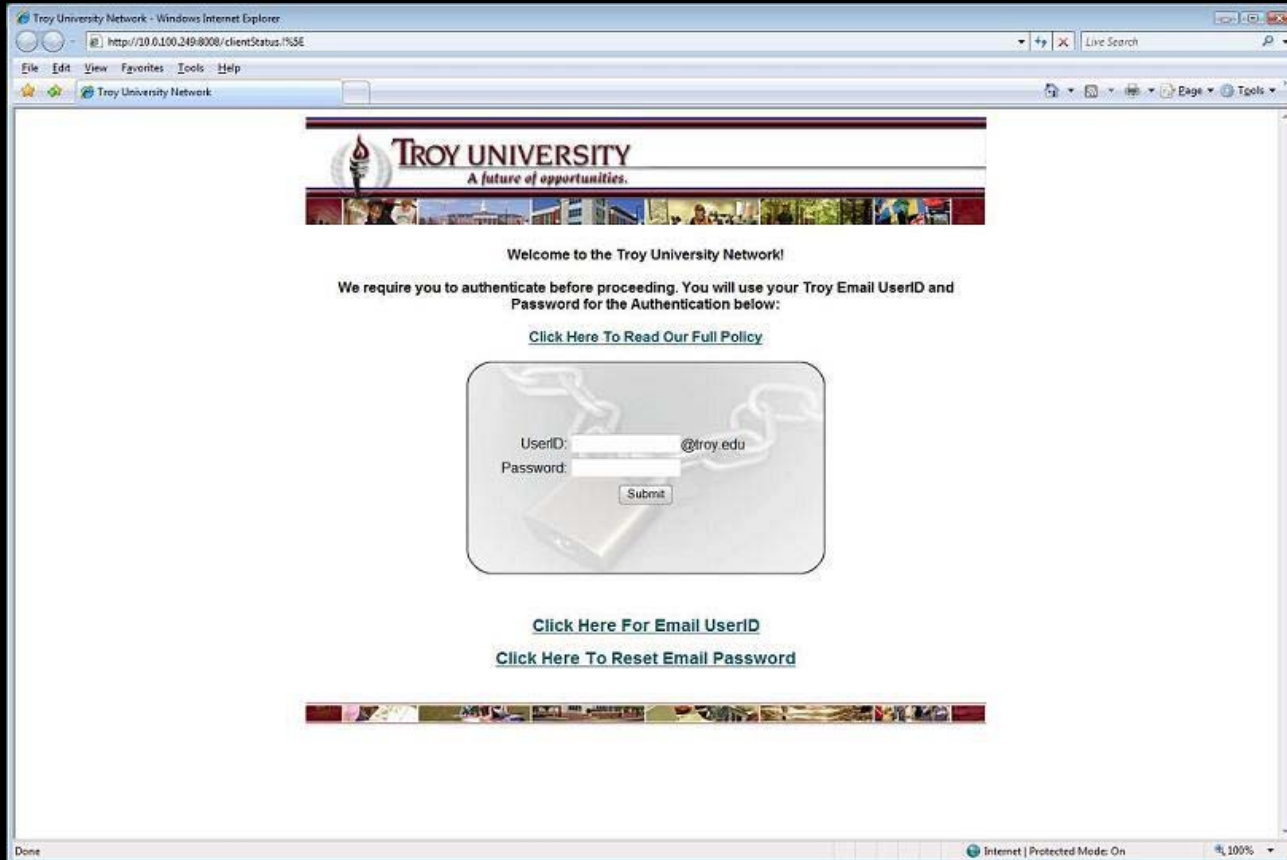
What you need to make it work

- Once implemented, you will need to open your Internet Browser and Authenticate. If you are using a Windows XP or Vista computer and/or a Macintosh, you will be prompted to install an application that checks for various things such as Windows Update, Macintosh Updates, and Anti-Virus. There will be certain parameters that must be met in order for access to be granted.

How Often you will need to login

- A forced Re-Authentication will occur every 18 hours. For example, if you login on Monday at 9:00 am, then you will be forced to re-authenticate on Tuesday at 9:00 am. This may interrupt all network traffic on your computer, except VPN, Datatel and system updates, until you have re-authenticated.

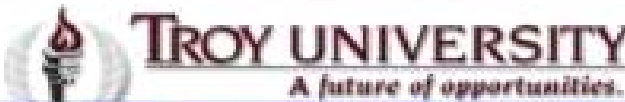
What will the login page look like?



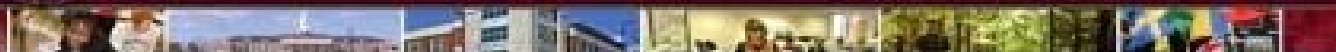
What if I do not know my Password?

- Type the link into your web browser. This will take you to the Password Reset Form.
- <https://it.troy.edu/email/index1.html>

What else can we expect to see?



TROY UNIVERSITY
A future of opportunities.



Welcome to the Network!

In order to ensure a safe operating environment for all users of the campus network, all computers are required to install and run various software to ensure a safe operating environment (anti-virus software, appropriate security patches, etc.). To ensure compliance, we require that all users install a software policy key.

[Click here to read the full Policy](#)

[Click here to read the FAQ](#)

[Yes, I will install the Policy Key and accept the terms and conditions for Internet Use](#)

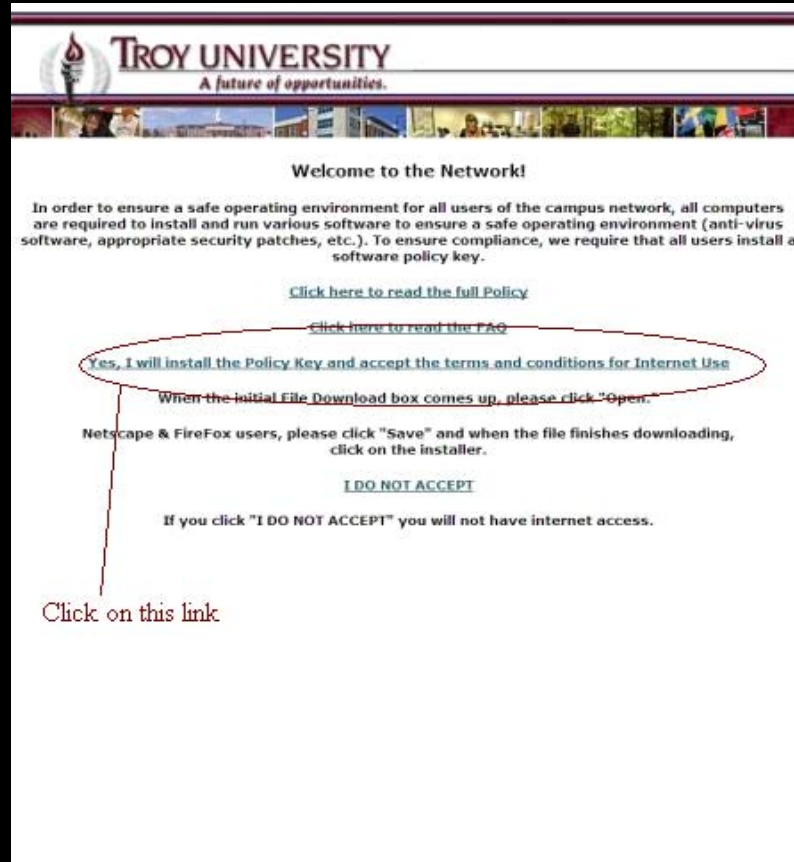
When the initial File Download box comes up, please click "Open."

Netscape & FireFox users, please click "Save" and when the file finishes downloading, click on the installer.

I DO NOT ACCEPT

If you click "I DO NOT ACCEPT" you will not have internet access.

This will only need to be installed ONCE, as long as you do not delete or uninstall the application.



The screenshot shows the Troy University network policy page. At the top is the Troy University logo with the tagline "A future of opportunities." Below the logo is a banner image. The main heading is "Welcome to the Network!". The text explains that all users must install and run various software to ensure a safe operating environment. There are two links: "Click here to read the full Policy" and "Click here to read the FAQ". The link "Yes, I will install the Policy Key and accept the terms and conditions for Internet Use" is circled in red. Below this link, it says "When the initial File Download box comes up, please click 'Open'." and "Netscape & FireFox users, please click 'Save' and when the file finishes downloading, click on the installer." There is a link "I DO NOT ACCEPT" and a note that clicking it will result in no internet access. A red line points from the circled link to the text "Click on this link" at the bottom left of the screenshot.

TROY UNIVERSITY
A future of opportunities.

Welcome to the Network!

In order to ensure a safe operating environment for all users of the campus network, all computers are required to install and run various software to ensure a safe operating environment (anti-virus software, appropriate security patches, etc.). To ensure compliance, we require that all users install a software policy key.

[Click here to read the full Policy](#)

[Click here to read the FAQ](#)

[Yes, I will install the Policy Key and accept the terms and conditions for Internet Use](#)

When the initial File Download box comes up, please click "Open."

Netscape & FireFox users, please click "Save" and when the file finishes downloading, click on the installer.

[I DO NOT ACCEPT](#)

If you click "I DO NOT ACCEPT" you will not have internet access.

Click on this link

File Download - Security Warning



Do you want to run or save this file?



Name: Impulse.exe

Type: Application, 3.13 MB

From: auth.impulse.com

Click on
Run

Run

Save

Cancel



While files from the Internet can be useful, this file type can potentially harm your computer. If you do not trust the source, do not run or save this software. [What's the risk?](#)

Internet Explorer - Security Warning



Do you want to run this software?



Name: Impulse.exe

Publisher: [Impulse Point LLC](#)



More options

Run

Don't Run

Click Run
Again



While files from the Internet can be useful, this file type can potentially harm your computer. Only run software from publishers you trust. [What's the risk?](#)

InstallShield Wizard

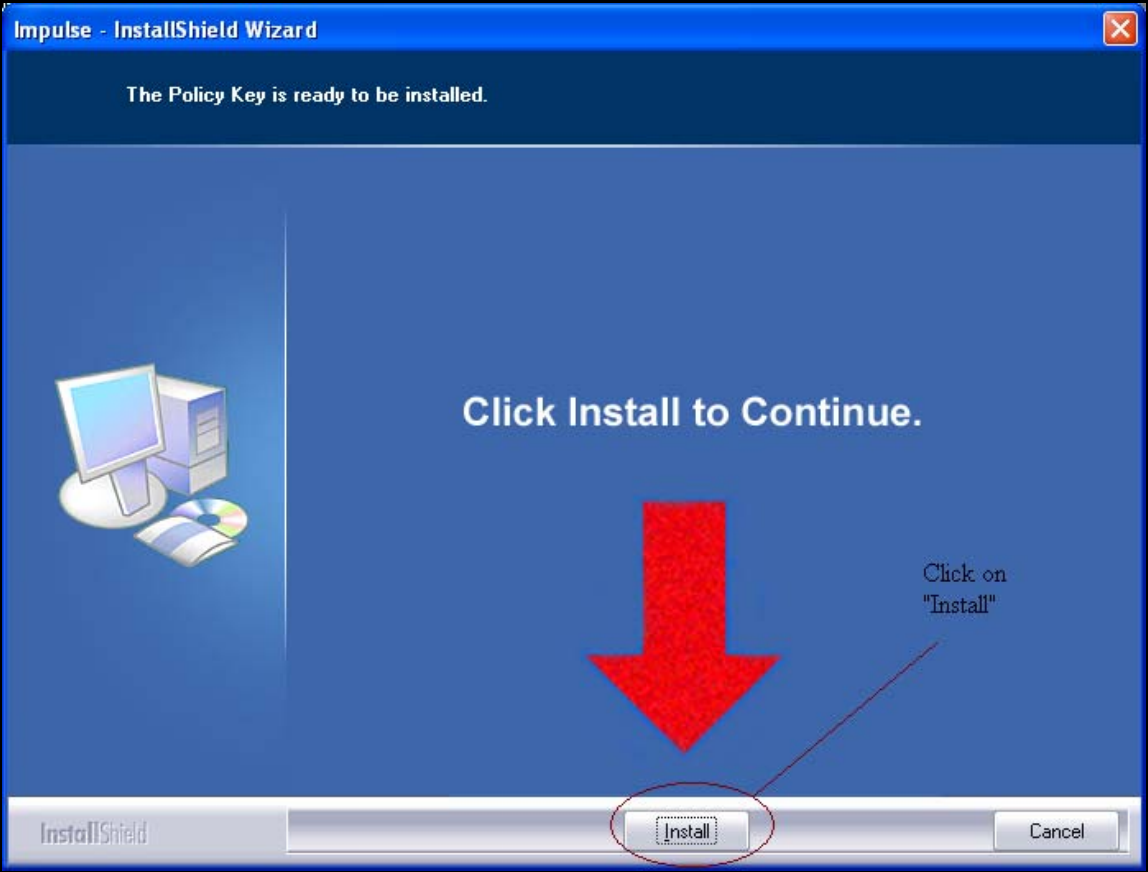


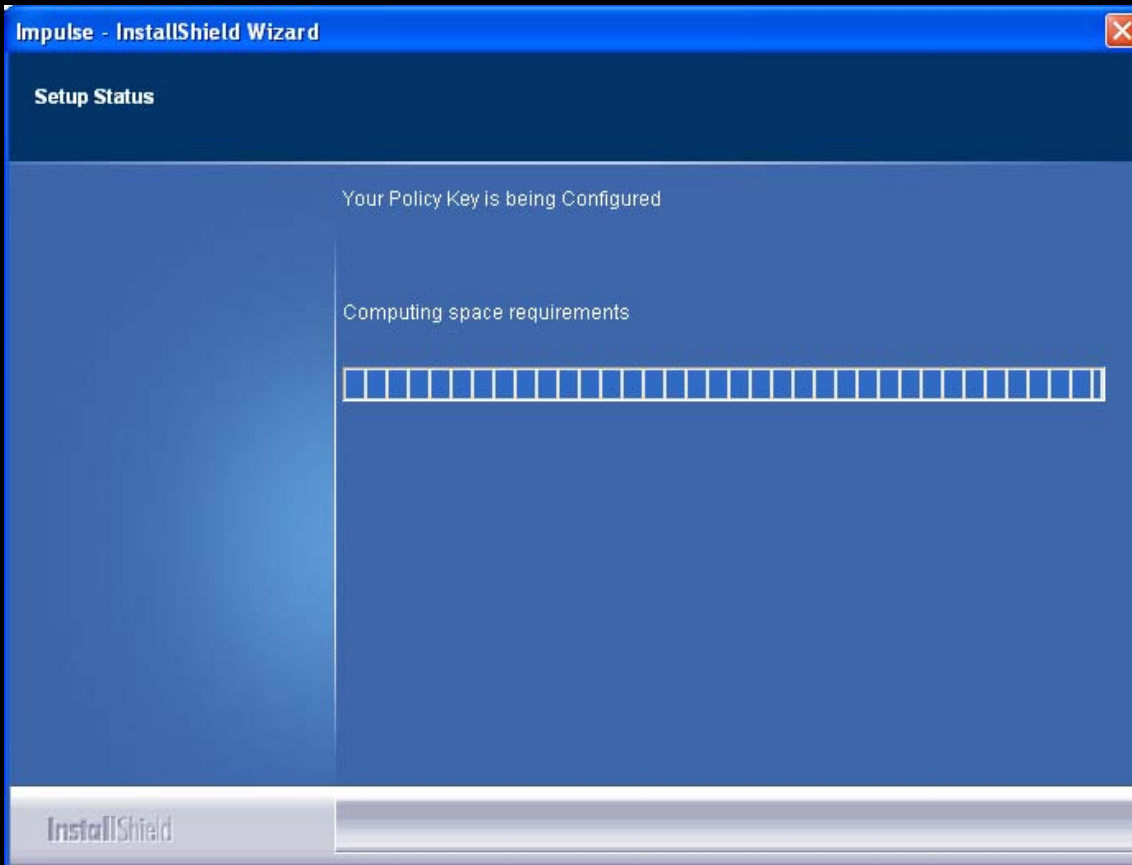
Impulse Setup is preparing the InstallShield Wizard, which will guide you through the program setup process. Please wait.

Configuring Windows Installer



Cancel





Impulse - InstallShield Wizard

InstallShield Wizard Complete



The Policy Key has been successfully installed and is operating normally.

Please click the Finish button below to Exit.

Click the
"Finish" button

InstallShield

Finish



**The SafeConnect Installer will download momentarily.
Please follow the instructions in the installer.**

After the download is complete, feel free to close this page!

If you experience problems with the installation of the program:

If after 15 seconds you do not see the installer appear,

1. [For XP/2000/ME users, Right click this link.](#)
2. Then select "Save Target As.." from the menu, navigate to your Desktop and save the file to the Desktop.
3. After the download is complete, navigate to your desktop and double click the "Impulse.exe" installer.
4. Follow the instructions on the Installer.

Special Note to users of

Important Contact Information

- In the event a user needs technical support. Please contact the Helpdesk at the numbers listed below or visit <https://it.troy.edu>
- Ext 4357 (HELP) or ext 5660.
- Please include your name, valid phone number where you can be reached, description of the problem.